

# Quick Start Guide—KST200e/300e Auto

anago

ensure optimum sharpness

QSG Auto A3 Ver3.0

www.anagosharp.com



Wear cut-resistant or chain mail gloves when handling blades

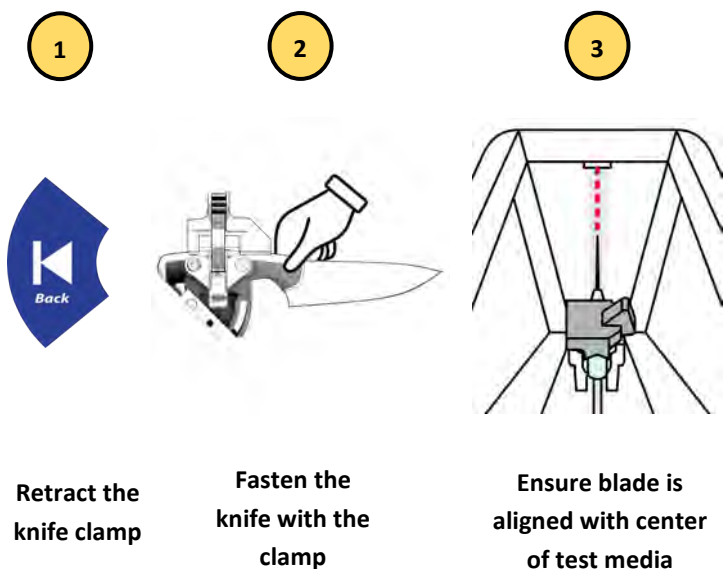
Calibration Frequency

Weekly / Fortnightly

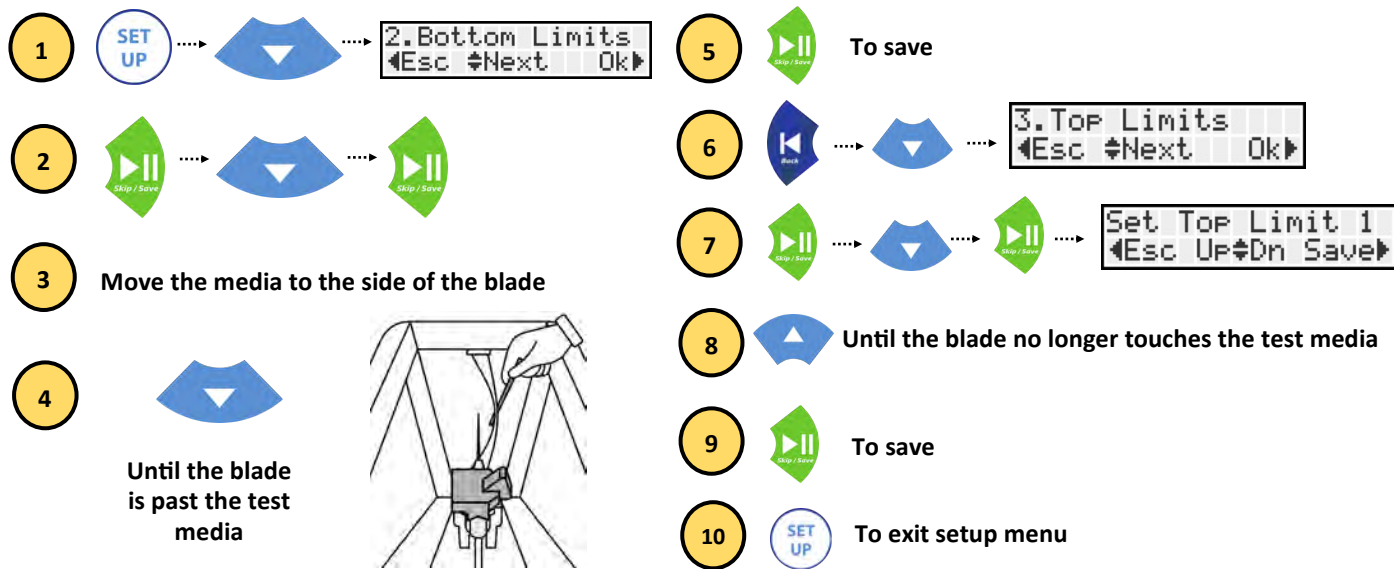
Limit Setting Frequency

First use, then as required

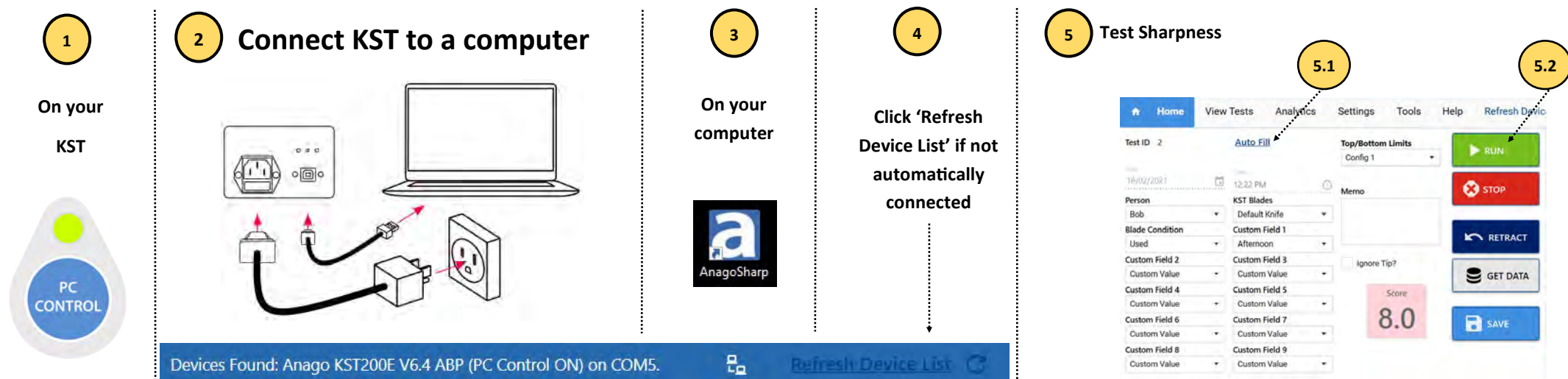
## Clamp the Blade



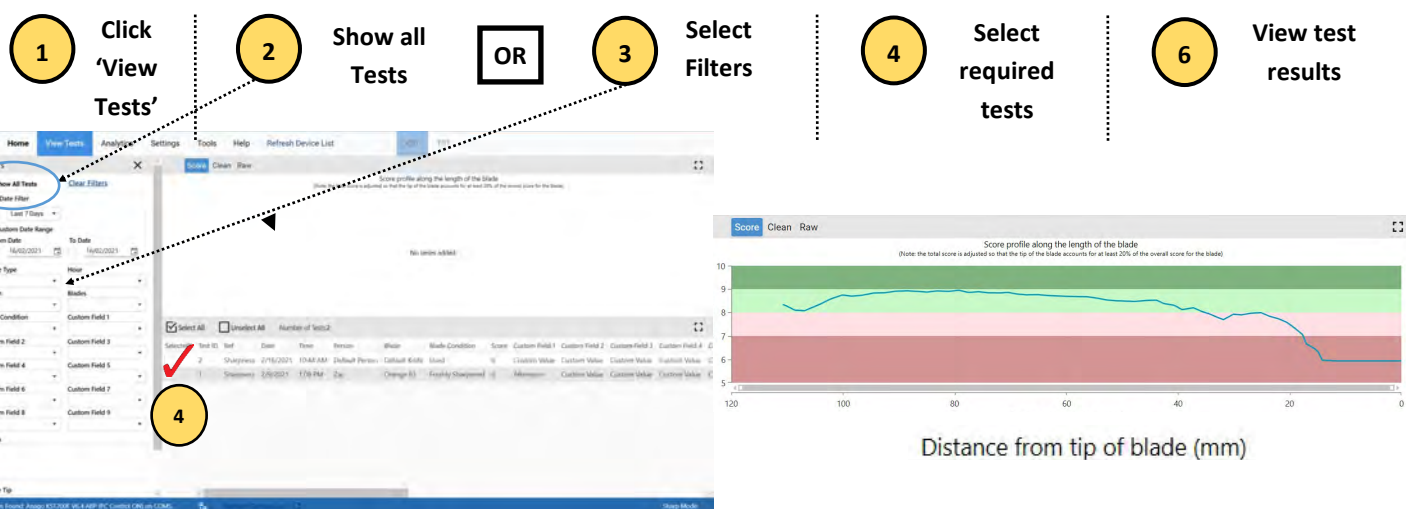
## Set the Limits



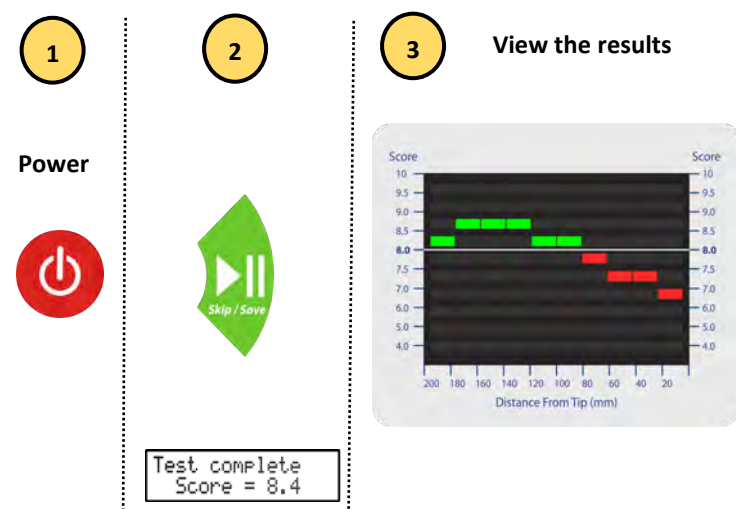
## Run a Test with a PC



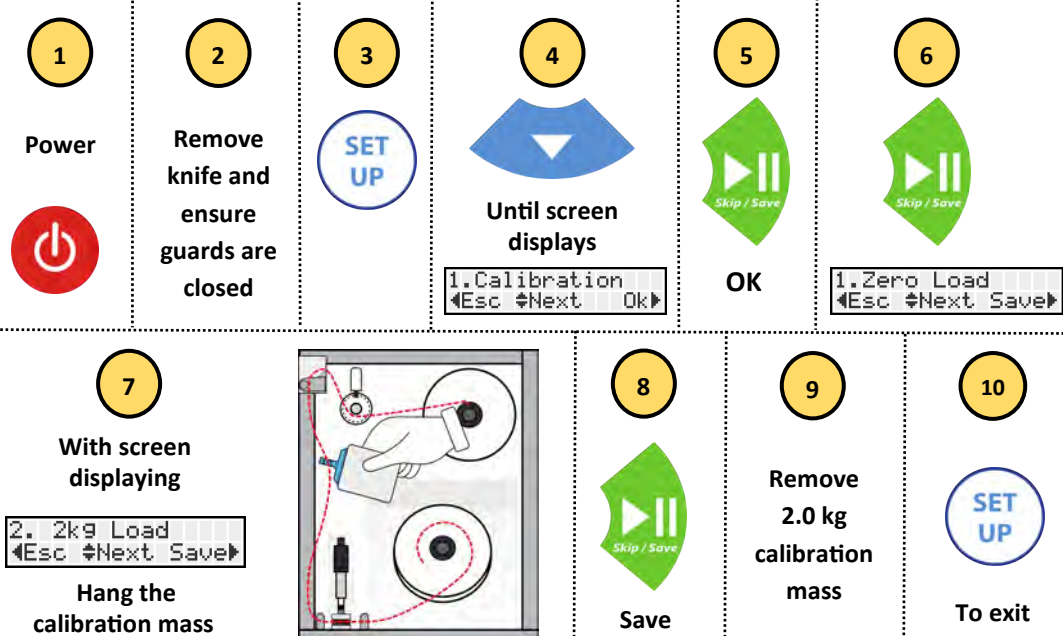
## View Saved Tests



## Run a test without a PC



## Load Cell Calibration



## Replace Test Media

